



WELCOME TO GARDENER'S ENCLAVE

These homes are designed by award-winning architects Bassenian Lagoni. We provide many options for you to choose from to create a home that compliments your lifestyle. All floor plans offer great, ease-of-living options for home-offices and kid's studying needs, as well as spaces for entertaining and enjoying time with friends and family.

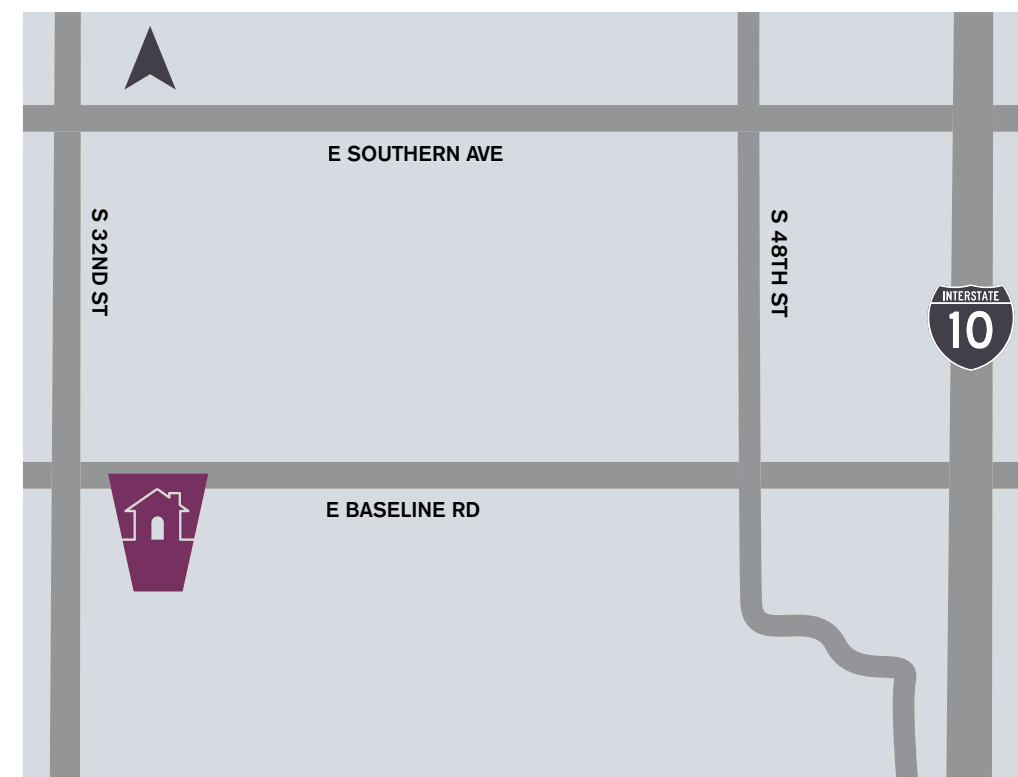
Premium custom options, beautifully designed spaces and our solid craftsmanship allow for the perfect home for gathering, entertaining and sharing life in meaningful ways with those you love.



gardener's enclave

The Gardener's Enclave name was inspired by the former Gardener's World nursery that graced this space for over 40 years. Lush, green spaces, beautifully landscaped common areas, trees, the backdrop of South Mountain and the meandering flow of the streets and community amenity areas will inspire you.

- 3-5 minutes from golf
- 5 minutes from shopping and dining
- 12 minutes from Phoenix Sky Harbor Airport
- 14 minutes from South Mountain Park and Preserve
- 16 minutes from Tempe Town Lake
- 17 minutes from Downtown Tempe
- 20 minutes from Downtown Phoenix
- 21 minutes from Downtown Chandler



This exclusive gated-community features 23 homes by Keystone Homes AZ, with an average lot size of 9,955 Sq Ft.



notes:



GardenersEnclave.com
480-422-0655
3309 E. Baseline Rd. | Phoenix, AZ



As part of an ongoing effort to continuously improve our product, Keystone Homes AZ reserves the right to change floor plans, specifications and prices without notice. Architectural elements such as window details, roof lines and square footage vary according to exterior elevation of the home. All maps, plans, landscaping and elevation renderings are artist conceptions and are not to scale and may vary slightly from finished homes. Please see your Sales Associate for more details. Thank you for visiting Keystone Homes! Arizona Licensed Contractor - ROC#060147 / Sales by Acacia Properties, Inc.



Keystone Homes, a family-owned business since 1989, celebrates over 30 years of crafting inviting spaces and irresistible communities. Each community is a reflection of our business philosophy and our unparalleled commitment to the people who live in them

Homebuilding is our passion and family is at the heart of every home we build. At Keystone Homes we deliver on what we promise: quality homes with innovative designs that are *distinctly yours*. This is YOUR community.



AGAVE

3 BED + DEN
+MUSIC ROOM
2 1/2 BATH
3-CAR GARAGE
2,752 SQ FT

The Agave is an easy favorite with its elegant flow, vaulted Great Room† and unique Music Room.

- Floorplan Options Include*:
- Luxury Spa Shower in Master Bath
 - 4th Bed/3rd Bath in lieu of Den/ Powder Room
- † On elevations A & B

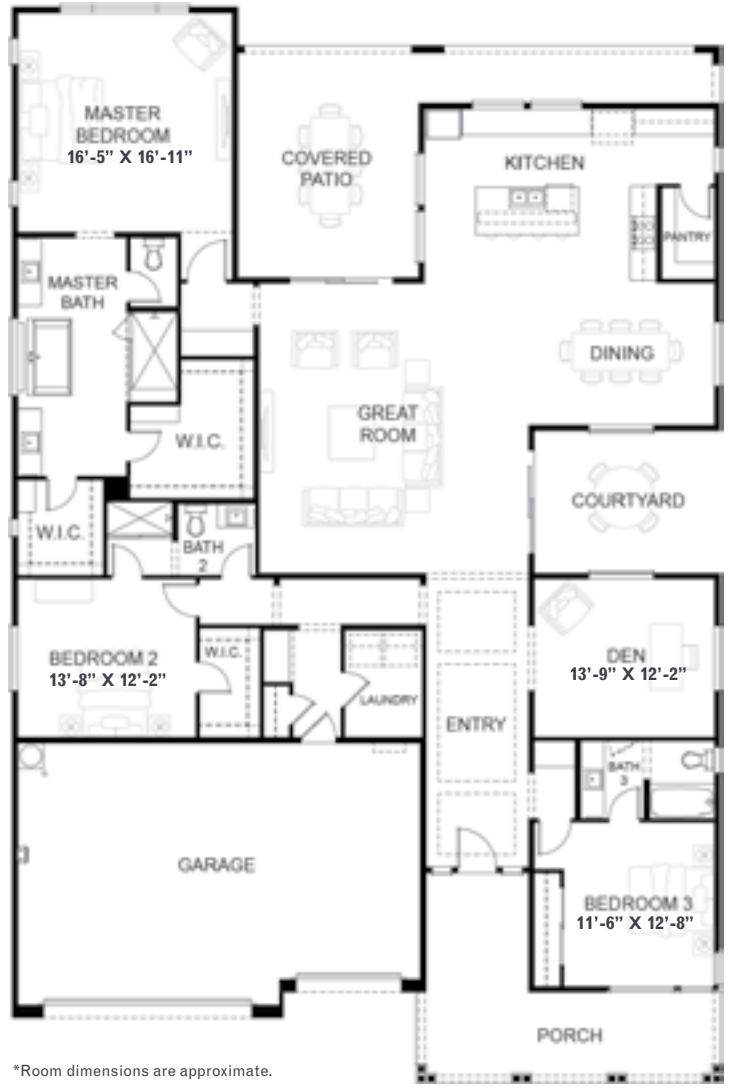


MARIGOLD

3 BED
+ DEN
3 BATH
3-CAR GARAGE
2,887 SQ FT

The Marigold is bathed in natural light thanks to side courtyard and windows opening to its large covered patios.

- Floorplan Options Include*:
- Corner Stack Glass Patio Doors at the Kitchen/Great Room
 - 4th Bed in lieu of Den
 - Gen Suite in lieu of Den



OCOTILLO

4 BED
+ GAME ROOM
4 BATH
3-CAR GARAGE
3,060 SQ FT

The Ocotillo is a thriller with its large front courtyard, generously-sized Game Room and two large storage pantries.

- Floorplan Options Include*:
- Corner Stack Glass Door in Great Room/Dining
 - Gen Suite in lieu of Game Room
 - Den (1) with Gallery Hall and extended courtyard in lieu of Bed 3
 - Den (2) in lieu of Bed 2
 - Casita in lieu of Bed 2



YUCCA

4 BED
+ GAME ROOM
3 1/2 BATH
3-CAR GARAGE
3,331 SQ FT

The Yucca's open concept extra-large spaces and seamless transitions from indoor to outdoor provide plenty of room for everyone to relax, play and live.

- Floorplan Options Include*:
- Luxury Spa Shower in Master Bath
 - Corner Stack Glass Door in Great Room/Dining
 - Den in lieu of Game Room
 - 5th Bed/4th Bath in lieu of Game Room
 - Gen Suite in lieu of Bed 4

